



A Seismic Source for Deep and Crustal Studies? ...

... the G. GUN 380 & 520 !

The renew interest for very Deep Seismic and/or Crustal Studies has increased the demand for higher amplitude spectrum of the low frequencies - below 10 Hz - generated by the seismic sources.

This requirement points out to the use of air guns with larger volumes and higher pressure.

In the same time, to avoid the lowest frequencies generated by the source to be cut off by the surface reflection or “ghost”, the source should be located deep enough, for instance between 9 m (30 ft) and 18 m (60 ft) depth.

For obvious practical reasons, then the number of elementary source - single air gun or cluster of guns - should be reduced to the minimum.



Based on the above considerations, the range of volume of the G. GUN has been extended to 380 in³ (6.2 l) and 520 in³ (8.5 l).

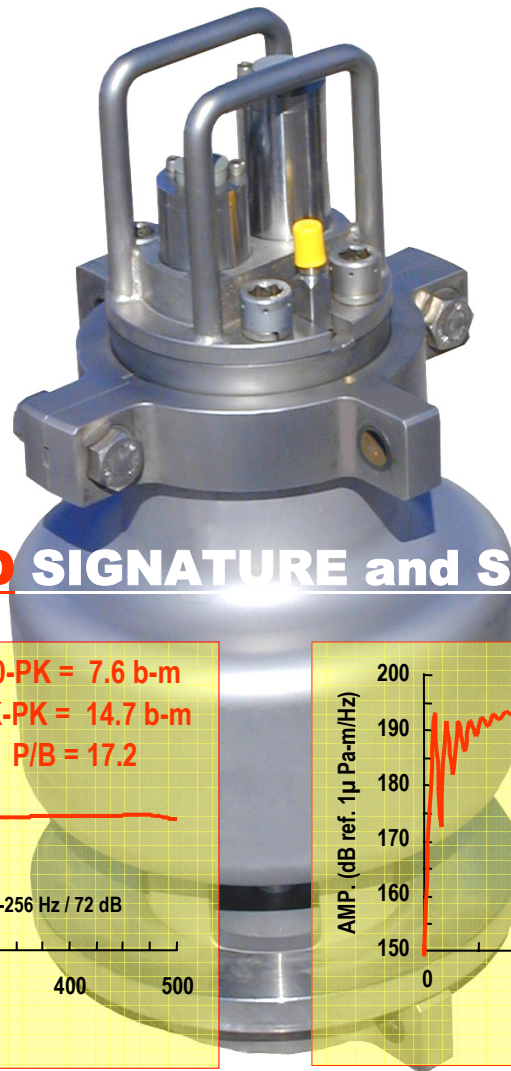
The internal parts are the same as for the standard G. GUN, so the replacement of some standard G. GUN by large guns is straight forward: only the casings are different.

The reliability and repeatability remain unchanged.

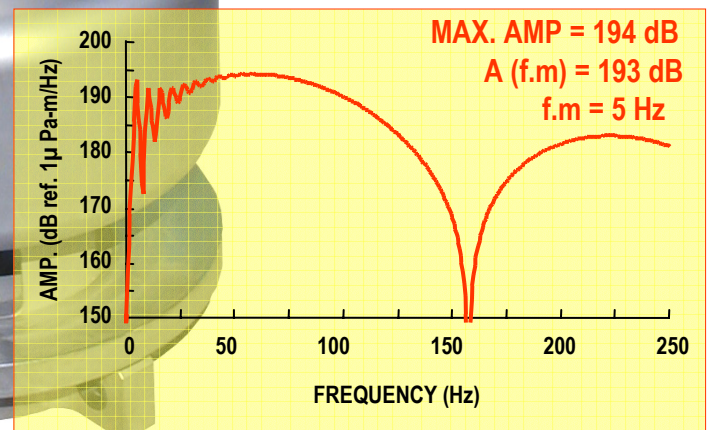
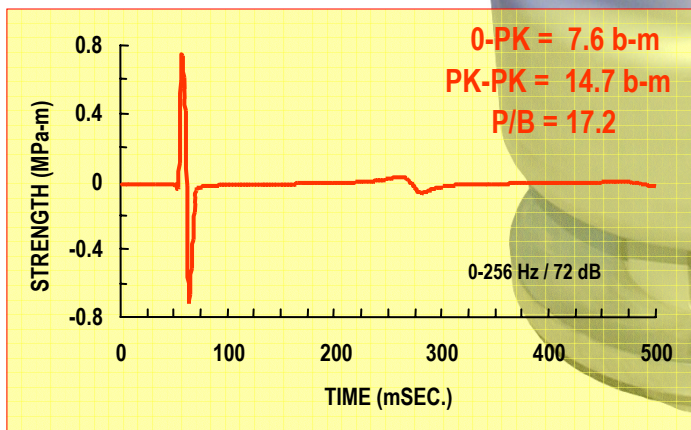
G. GUN 380 Specifications

PHYSICAL

- Weight: 85 Kg (187 lbs)
- Length: 600 mm (23.6")
- Width: 285 mm (11.2")
- Diameter: 292 mm (11.5")



FAR FIELD SIGNATURE and SPECTRUM



2 * G. GUN in Parallel Cluster * / 760 cu.in.

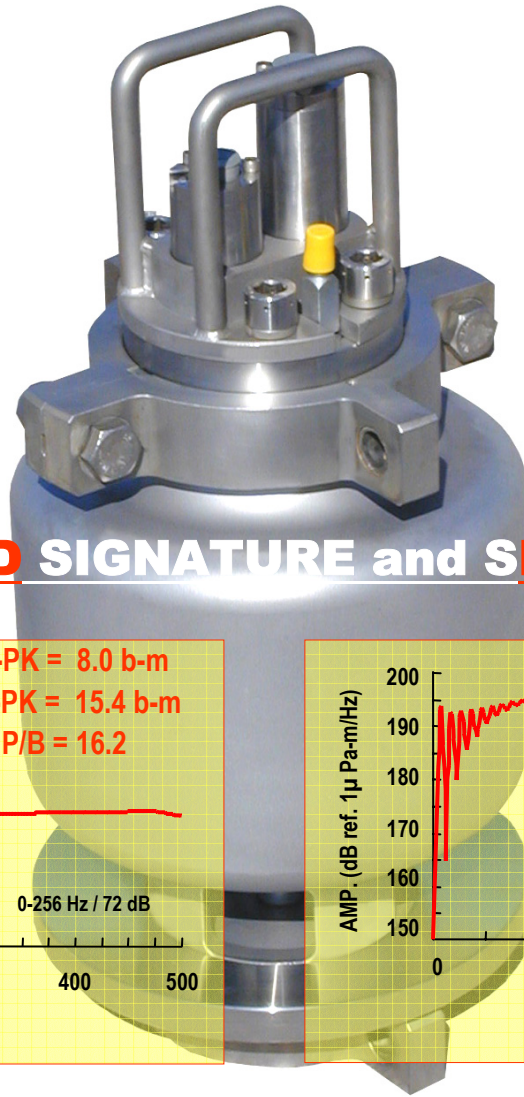
Pressure = 3,000 psi

Depth = 5.0 meters

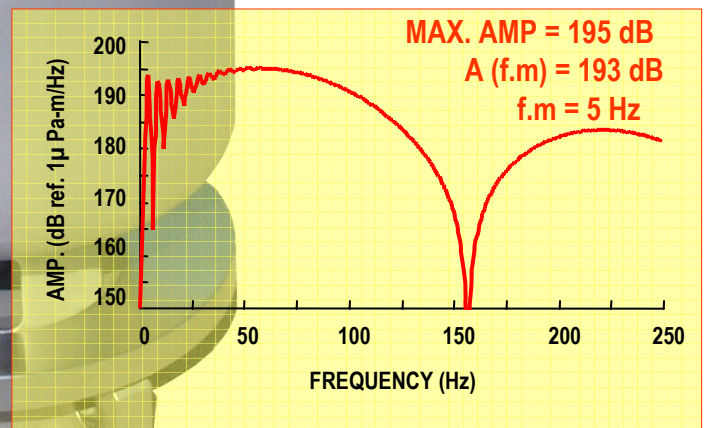
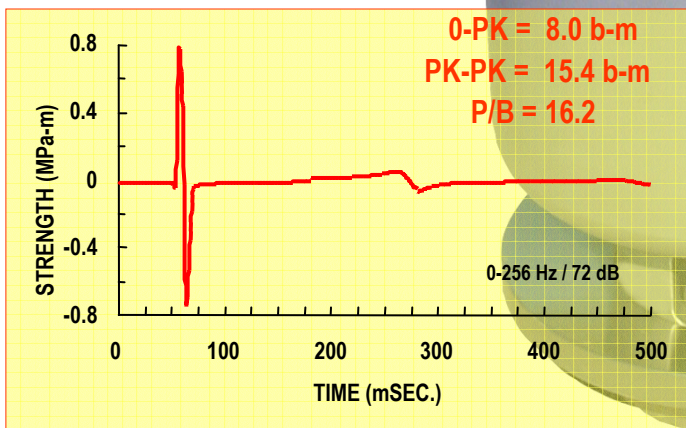
G. GUN 520 Specifications

PHYSICAL

- Weight: 90 Kg (198 lbs)
- Length: 600 mm (23.6")
- Width: 285 mm (11.2")
- Diameter: 292 mm (11.5")



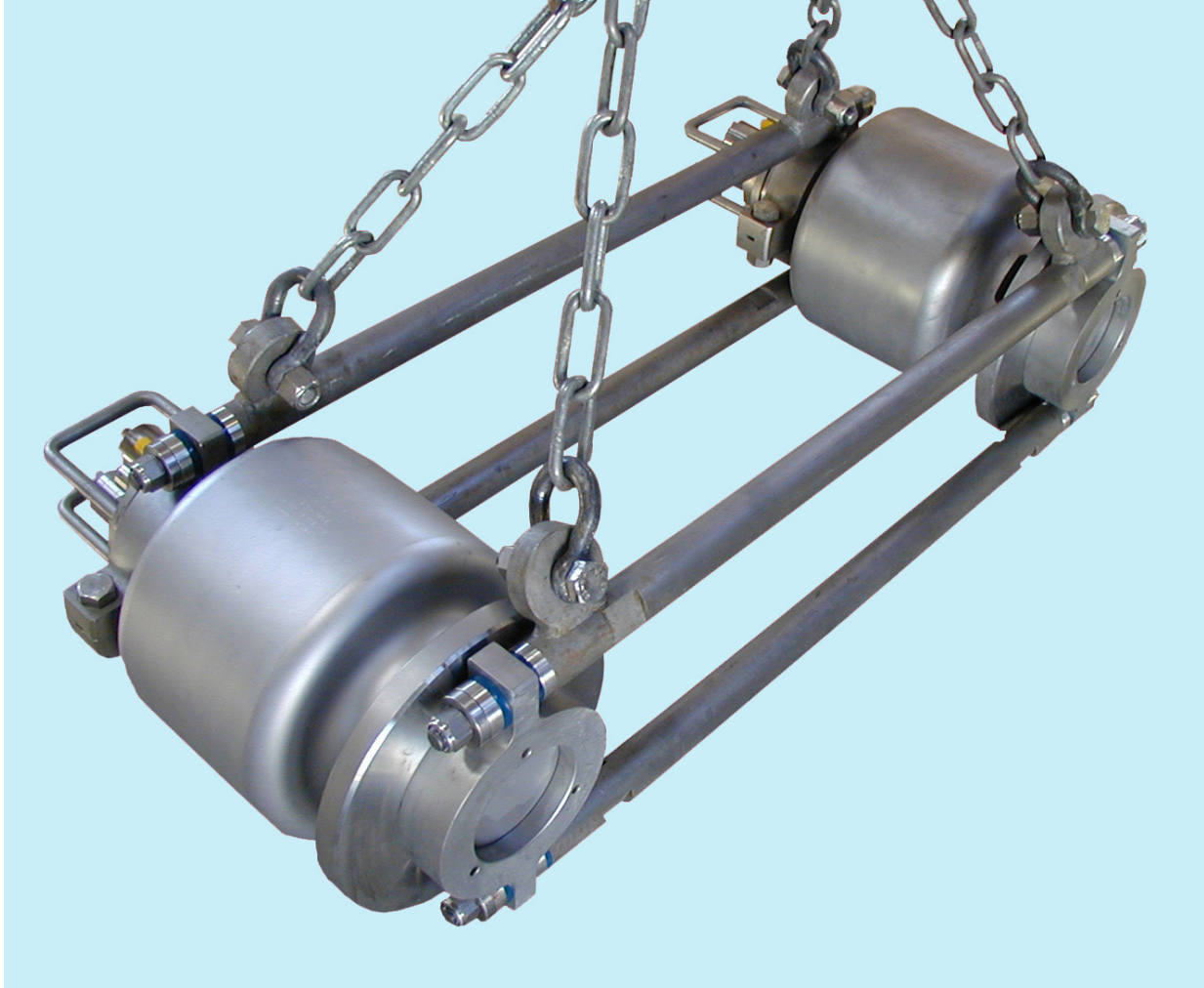
FAR FIELD SIGNATURE and SPECTRUM



2 * G. GUN in Parallel Cluster * / 1,040 cu.in.

Pressure = 3,000 psi

Depth = 5.0 meters



2 * G. GUN 520 in³ each assembled in Parallel Cluster *

(*) U.S Patents: 5,980,148 & 6,364,569

For further information, please contact us at:



**S.S.I - HOUSTON / Tel : (1) 713 782 2586
Fax : (1) 713 782 0534**



**SODERA - FRANCE / Tel : (33) 494 21 69 92
Fax : (33) 494 21 73 44**